

# Conglomerate

*A Subtle Blend of Serif and Sans  
for Text and Display Use*

---

designed by Greg Shutters



FFONTS & DESIGN

C

O

N

G

L

O

M

E

R

A

T

E

---

# Conglomerate

*Sans or serif? Square or rounded? Calligraphic or geometric?* CONGLOMERATE is both all and none of these things — a subtle yet unorthodox blend of typographic traits resulting in a clean, unique, and versatile font family with large, open counters for legibility in text yet crisp, sharp details that sparkle at display sizes. Conglomerate is sturdy but never stiff, crisp but never stark — perfect for projects that require a more contemporary feel than either a traditional serif or geometric sans might bring.

Each style also contains an extensive set of OpenType features for quality typesetting — including small caps, proportional, tabular, lining, and oldstyle numerals, case-sensitive punctuation, ligatures, arbitrary fractions, localized forms, and elevated, underlined ordinal indicators for English, French, Spanish, Italian, and other languages.

Light & Light Italic

Conglomerate

Book & Book Italic

Conglomerate

Medium & Medium Italic

Conglomerate

Demi & Demi Italic

Conglomerate

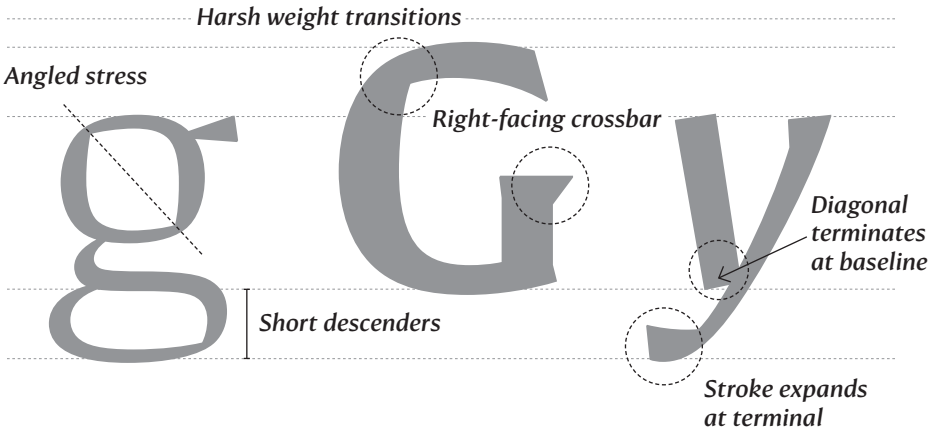
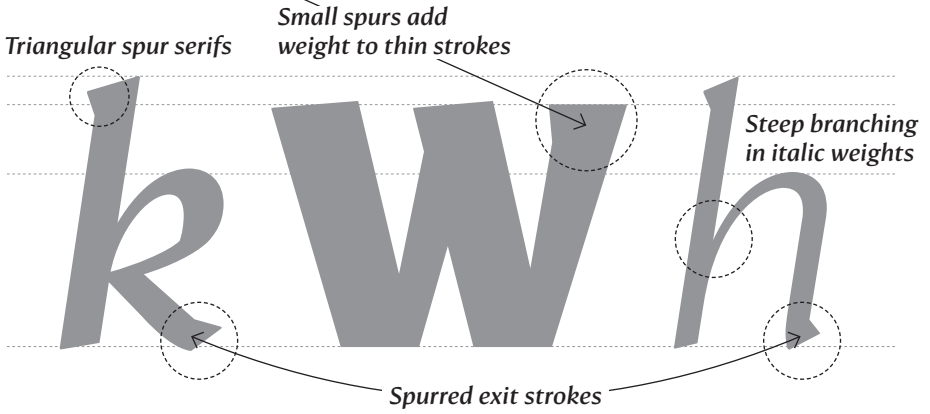
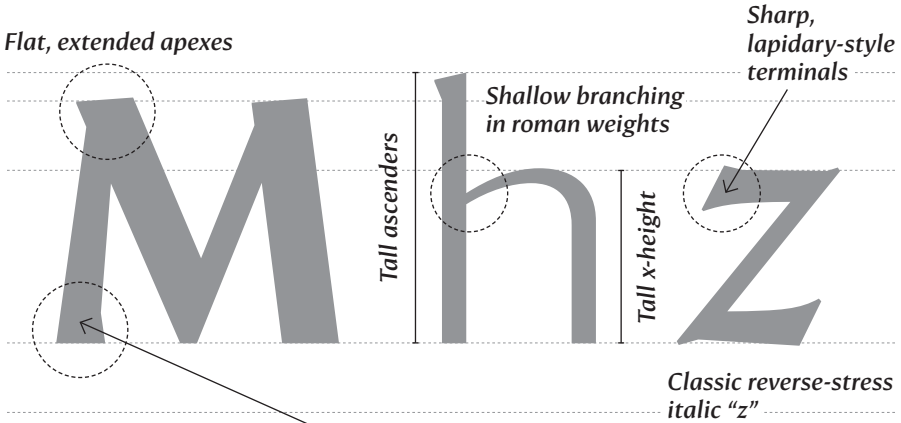
Bold & Bold Italic

Conglomerate

Black & Black Italic

Conglomerate

# Design Notes



*Vermouth & Applejack*

**Universitas Xaveriana Cincinnatiensis**

**Anglerfish**

'54 STUDEBAKER CHAMPION 6

**Yellowknife, NT**

*Barbeque Ranch flavor by Zapp's*

**Jacquard Loom**

***Lexington Avenue & 25<sup>th</sup> Street***

*130-day Sweet Gorgonzola*

**The New Yorker**

**LOUIS XVI & THE FRENCH REVOLUTION OF 1789**

Maximize Quadratic Form

***Egyptian Flax Fiber & Wood Pulp***

# Example Text Settings

---

TEXT FROM WIKIPEDIA

## Book & Demi 11/14pt

CONGLOMERATE is a coarse-grained clastic sedimentary rock that is composed of a substantial fraction of rounded to subangular gravel-size *clasts*, e.g., granules, pebbles, cobbles, and boulders, **larger than 2 mm** (0.079 in) in diameter. Conglomerates form by the *consolidation and lithification of gravel*. Conglomerates typically contain finer grained sediment, e.g., either sand, silt, clay or combination of them, called **matrix** by geologists, filling their interstices and are often cemented by calcium carbonate, iron oxide, silica, or hardened clay.

## Book & Demi 9/11pt

CONGLOMERATE is a coarse-grained clastic sedimentary rock that is composed of a substantial fraction of rounded to subangular gravel-size *clasts*, e.g., granules, pebbles, cobbles, and boulders, **larger than 2 mm** (0.079 in) in diameter. Conglomerates form by the *consolidation and lithification of gravel*. Conglomerates typically contain finer grained sediment, e.g., either sand, silt, clay or combination of them, called **matrix** by geologists, filling their interstices and are often cemented by calcium carbonate, iron oxide, silica, or hardened clay.

## Medium & Bold 11/14pt

CONGLOMERATE is a coarse-grained clastic sedimentary rock that is composed of a substantial fraction of rounded to subangular gravel-size *clasts*, e.g., granules, pebbles, cobbles, and boulders, **larger than 2 mm** (0.079 in) in diameter. Conglomerates form by the *consolidation and lithification of gravel*. Conglomerates typically contain finer grained sediment, e.g., either sand, silt, clay or combination of them, called **matrix** by geologists, filling their interstices and are often cemented by calcium carbonate, iron oxide, silica, or hardened clay.

## Medium & Bold 9/11pt

CONGLOMERATE is a coarse-grained clastic sedimentary rock that is composed of a substantial fraction of rounded to subangular gravel-size *clasts*, e.g., granules, pebbles, cobbles, and boulders, **larger than 2 mm** (0.079 in) in diameter. Conglomerates form by the *consolidation and lithification of gravel*. Conglomerates typically contain finer grained sediment, e.g., either sand, silt, clay or combination of them, called **matrix** by geologists, filling their interstices and are often cemented by calcium carbonate, iron oxide, silica, or hardened clay.

# OpenType Features

---

## Case Sensitive Forms [CASE]

---

«¡Todos a bordo! [B2]» → «¡**TODOS A BORDO!** [B2]»

## Small Capitals [SMCP]

---

“Hello! & Goodbye #16@3?” → “**HELLO!** & **GOODBYE #16@3?**”

## All Small Capitals [C2SC]

---

“Hello! & Goodbye #16@3?” → “**HELLO!** & **GOODBYE #16@3?**”

## Figures: Lining [LNUM]; Oldstyle [ONUM]; Tabular [TNUM]; Proportional [PNUM]

---

0123456789 → **0123456789** → **0123456789** → **0123456789**

## Automatic Fractions [FRAC]; Numerators [NUMR] & Denominators [DNOM]

---

00/100 365/12 15 3/4 39.5/50 → **00/100 365/12 15 3/4 39.5/50**

## Superscript / Superiors [SUPS]; Subscript [SUBS] / Scientific Inferiors [SINF]

---

H<sub>2</sub>SO<sub>4</sub> π<sub>r</sub><sup>2</sup> index(1,2) → **H<sub>2</sub>SO<sub>4</sub> π<sup>2</sup> index<sup>(1,2)</sup>**

## Ordinal Indicators [ORDN]

---

2nd 5TH 1er 19ÈME 3a → **2<sup>nd</sup> 5<sup>TH</sup> 1<sup>er</sup> 19<sup>ÈME</sup> 3<sup>a</sup>**

## Ligatures [LIGA]

---

offkey, física, schiffahrt → **offkey, física, schiffahrt**

## Localized Forms [LOCL]: Dutch / Polish / Romanian / Turkish

---

míjn, część, şpriţuit, fildişi → **míjn, część, şpriţuit, fildişi**

## Contextual Alternates [CALT]: Arrows

---

-|^ -/^ --> -\v -|v v/- <-- ^\ - v|^ <-> → **↑ ↗ → ↘ ↓ ↙ ← ↖ ↕ ↔**

## Stylistic Alternates [SALT]: Versal Eszett

---

größte → **GRÖSSTE** CAPS **GRÖSSTE** SMALL CAPS → **GRÖßTE** **GRÖßTE**





---

# Conglomerate

Foundry: *Typetanic Fonts*

Designer: *Greg Shutters*

Release Date: *2016*

Format: *OpenType (OTF) and TrueType (TTF)*

Number of Glyphs per Font: *952*

**Languages Supported:** *Afrikaans, Albanian, Basque, Bosnian, Catalan, Cornish, Croatian, Czech, Danish, Dutch, English, Esperanto, Estonian, Faroese, Filipino, Finnish, French, Gaelic, Galician, German, Greenlandic, Hungarian, Icelandic, Indonesian, Italian, Latin, Latvian, Lithuanian, Malay, Maltese, Norwegian, Polish, Portuguese, Romanian, Romansh, Slovak, Slovenian, Spanish, Swahili, Turkish, Welsh, and many more.*

## **About Typetanic Fonts:**

Typetanic Fonts is the personal type foundry and lettering studio of Greg Shutters, and is based in Chicago, IL, USA. He began designing type in 2009, and graduated from the Type@Cooper type design program in New York in 2014. Mr. Shutters has won multiple awards for his work with Typetanic, including the esteemed Type Directors Club award for excellence in type design.

## **Special thanks to:**

**The Staff & Advisors of the Type@Cooper Program, New York, NY**

- Jesse Ragan
- Andy Clymer
- Cara Di Edwardo
- Sumner Stone
- Alexander Tochilovsky

**Micah Stupak-Hahn, for TrueType hinting and technical support**

fk

@

5

&

g

qr

>>

Z

↑

ß

%

a



FONTS & DESIGN

---

[TypetanicFonts.com](http://TypetanicFonts.com) • [info@typetanicfonts.com](mailto:info@typetanicfonts.com)

© Greg Shutters, 2016